



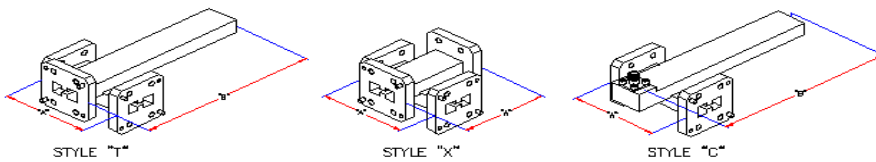
Manufacturers-Precision Microwave Components
Cheshire, CT U.S.A.

1425 Highland Ave (Rt. 10) P.O. Box 728
Cheshire, CT 06410-1216 U.S.A
Phone #203-272-3234 Fax #203-272-0352
E-Mail: Sales@microtech-inc.com

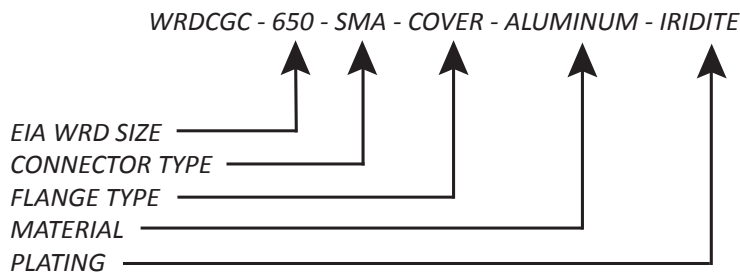
Visit our website: <http://www.microtech-inc.com>

DOUBLE RIDGED CROSSGUIDE COUPLER SPECIFICATIONS

TYPICAL ELECTRICAL / MECHANICAL SPECIFICATIONS							
EIA WRD SIZE	FREQUENCY RANGE (GHz)	PRIMARY ARM VSWR (Max.)	COUPLING VARIATION +/- (dB)	FLANGE	"A" Dim. Max. Inches	"B" Dim. Max. Inches	STYLE "C" JACK
180	18.0 – 40.0	1.20	5.0	COVER	4.0	6.00	2.9
650	6.5 – 18.0	1.10	5.0	COVER	4.0	8.00	SMA
750	7.5 – 18.0	1.10	4.0	COVER	4.0	8.00	SMA
580	5.8 – 16.0	1.10	4.0	COVER	4.0	8.00	SMA
475	4.75 – 11.0	1.10	3.5	COVER	5.0	9.00	SMA
350	3.5 – 8.2	1.10	3.5	COVER	6.0	12.00	N
200	2.0 – 4.8	1.10	3.5	COVER	10.0	16.00	N



ORDERING INFORMATION



- Standard couplings available are 30, 40, 50, and 60. Others values available on special order. Specify by adding coupling and style desired as a suffix to the part number. Example: 240109 -30.
- Coaxial secondary outputs are also available. Contact the factory or our local Manufacturer's Representative for details.
- Nominal directivity is 12 dB.
- Material is 6061/6063 Aluminum.