



Manufacturers-Precision Microwave Components
Cheshire, CT U.S.A.

1425 Highland Ave (Rt. 10) P.O. Box 728
Cheshire, CT 06410-1216 U.S.A
Phone #203-272-3234 Fax #203-272-0352
E-Mail: Sales@microtech-inc.com

Visit our website: <http://www.microtech-inc.com>

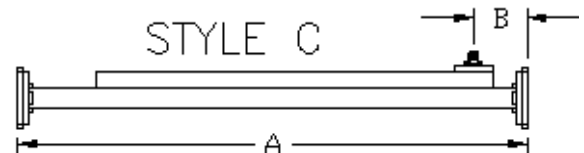
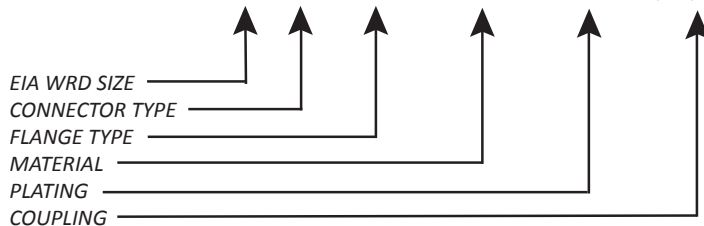
DOUBLE RIDGED BROADWALL COUPLER SPECIFICATIONS

TYPICAL ELECTRICAL / MECHANICAL SPECIFICATIONS					
EIA WRD SIZE	FREQUENCY RANGE (GHz)	COUPLING SENSITIVITY +/- (dB)	COUPLING AVERAGE +/- (dB)	PRIMARY ARM VSWR (Max.)	MINIMUM DIRECTIVITY (dB)
180	18.0 – 40.0	2	1.0	1.10	30
650	6.5 – 18.0	1.5	1.0	1.05	35
750	7.5 – 18.0	1.5	1.0	1.05	35
580	5.8 – 16.0	1.5	1.0	1.05	35
475	4.75 – 11.0	1.2	1.0	1.05	35
350	3.5 – 8.2	1.2	1.0	1.05	37
200	2.0 – 4.8	1.2	1.0	1.05	37

TYPICAL MECHANICAL SPECIFICATIONS					
EIA WRD	"A" Dim. Max. Inches		"B" Dim. Inches	FLANGE TYPE	COAX STYLE JACK
180	10.00		1.00	Cover	2.4
650	14.00		1.50	Cover	SMA
750	14.00		1.50	Cover	SMA
580	16.00		1.50	Cover	SMA
475	21.00		2.00	Cover	SMA
350	24.00		2.00	Cover	N
200	36.00		3.00	Cover	N

Ordering Information

WRDBWC - 650 - SMA - COVER - ALUMINUM - IRIDITE - 10, 20, 30, 40



Note: Standard coupling values are 10dB, 20dB, 30dB, and 40dB. Other values and configurations are available upon request. Specify coupling by adding as a suffix. Contact Factory with your requirements