



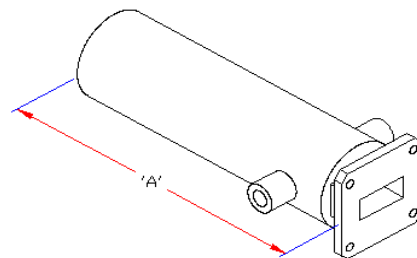
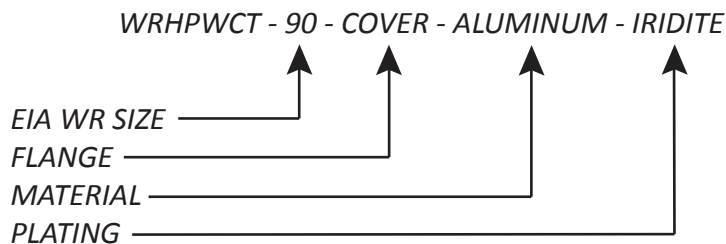
Manufacturers-Precision Microwave Components
Cheshire, CT U.S.A.

1425 Highland Ave (Rt. 10) P.O. Box 728
Cheshire, CT 06410-1216 U.S.A
Phone #203-272-3234 Fax #203-272-0352
E-Mail: Sales@microtech-inc.com
Visit our website: <http://www.microtech-inc.com>

HIGH POWER WATER COOLED TERMINATION SPECIFICATIONS

TYPICAL ELECTRICAL / MECHANICAL SPECIFICATIONS						
EIA WR SIZE	FREQUENCY RANGE (GHz)	VSWR Max.	AVERAGE POWER HANDLING (Max. Watts)	MATERIAL	FLANGE EQUIV.	"A" DIMENSION (Max. Inches)
22	33.00-50.00	1.10	250	ALUM/BR	COVER	6.00
28	26.50 - 40.00	1.10	400	ALUM/BR	COVER	6.00
34	22.00 - 33.00	1.10	500	ALUM/BR	COVER	6.00
42	18.00 - 26.50	1.10	750	ALUM/BR	COVER	6.00
51	15.00 - 22.00	1.10	750	ALUM/BR	COVER	6.00
62	12.40 - 18.00	1.10	1000	ALUM/BR	COVER	6.00
75	10.00 - 15.00	1.10	1000	ALUM/BR	COVER	7.00
90	8.20 - 12.40	1.10	1500	ALUM/BR	COVER	7.00
112	7.05 - 10.00	1.10	2000	ALUM/BR	COVER	8.00
137	5.85 - 8.20	1.10	3000	ALUM/BR	COVER	9.00
159	4.90 - 7.05	1.10	3000	ALUM/BR	CPRF	13.00
187	3.95 - 5.85	1.10	4000	ALUM/BR	COVER	13.00
229	3.30 - 4.90	1.10	4000	ALUM/BR	CPRF	18.00
284	2.60 - 3.95	1.10	5000	ALUM/BR	COVER	18.00

ORDERING INFORMATION



A = Aluminum. B = Brass. Coolant input and output location and size, may vary.

Microtech, Inc. High power water- cooled terminations are designed where a matched load is desired to terminate a waveguide transmission line in a dissipative, nonreflecting component. Add suffix to part number for material.

Note: Other configurations, specifications, and power ratings available upon request as well as a large variety of lower and higher-power loads available to MIL-D-3954. Contact the factory with your requirements.