



Manufacturers-Precision Microwave Components
Cheshire, CT U.S.A.

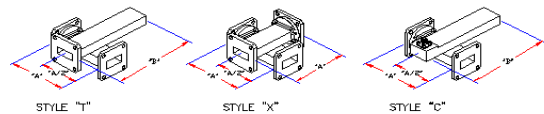
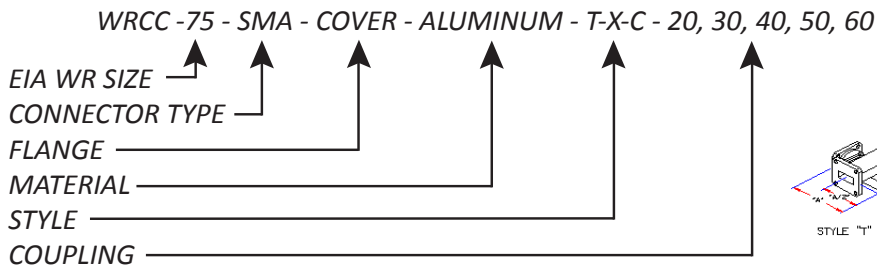
1425 Highland Ave (Rt. 10) P.O. Box 728
Cheshire, CT 06410-1216 U.S.A
Phone #203-272-3234 Fax #203-272-0352
E-Mail: Sales@microtech-inc.com

Visit our website: <http://www.microtech-inc.com>

CROSSGUIDE COUPLER SPECIFICATIONS

TYPICAL ELECTRICAL / MECHANICAL SPECIFICATIONS							
EIA WR SIZE	FREQUENCY RANGE (GHz)	PRIMARY ARM VSWR Max.	COUPLING VARIATION +/- (dB)	FLANGE EQUIV.	"A" DIMENSION (Max. Inches)	"B" DIMENSION (Max. Inches)	CONNECTOR "C" JACK
22	33.00 - 50.00	1.10	3.0	Cover	2.25	0.70	2.9
28	26.50 - 40.00	1.10	2.0	Cover	2.25	0.70	2.9
34	22.00 - 33.00	1.10	2.0	Cover	2.25	0.80	SMA
42	18.00 - 26.50	1.10	2.0	Cover	2.25	0.80	SMA
51	15.00 - 22.00	1.10	1.5	Cover	2.50	0.90	SMA
62	12.40 - 18.00	1.10	1.5	Cover	2.50	0.90	SMA
75	10.00 - 15.00	1.10	1.5	Cover	3.00	1.00	SMA
90	8.20 - 12.40	1.10	1.5	Cover	3.00	1.30	SMA
102	7.00 - 11.00	1.10	1.5	Cover	3.00	2.25	SMA
112	7.05 - 10.00	1.10	1.2	Cover	4.00	2.25	SMA
137	5.85 - 8.20	1.10	1.0	Cover	4.00	2.40	N
159	4.90 - 7.05	1.10	1.0	CPRF	5.00	2.50	N
187	3.95 - 5.85	1.10	1.0	CPRF	5.00	1.55	N
229	3.30 - 4.90	1.10	1.0	CPRF	6.00	3.50	N
284	2.60 - 3.95	1.10	1.0	CPRF	8.00	4.25	N
340	2.20 - 3.30	1.10	1.0	CPRF	10.00	4.50	N

Ordering Information



1. Standard couplings available are 20, 30, 40, 50, and 60. Others values available on special order. Specify by adding coupling and style desired as a suffix to the part number. Example 233317X-20.
2. Coaxial secondary outputs are also available. Contact the factory or our local Manufacturer's
3. Representative for details.
4. Nominal directivity is 20 dB.
5. Couplers that conform to MIL-C-15370 are also available.