

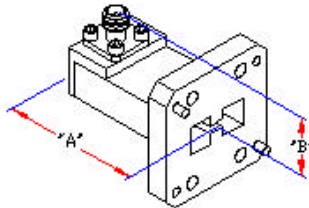


1425 Highland Avenue (Rt. 10) P.O. Box 728
 Cheshire, CT 06410 - 1216 U.S.A.
 Phone # 203 - 272 - 3234
 Fax # 203 - 271 - 0352
 E - mail: Sales@microtech-inc.com
 Visit our Web site: <http://www.microtech-inc.com>

DOUBLE RIDGED WAVEGUIDE TO COAX ADAPTER SPECIFICATIONS

TYPICAL ELECTRICAL / MECHANICAL SPECIFICATIONS									
EIA WRD SIZE	MODEL No.	FREQUENCY RANGE (GHz)	VSWR Max.	INSERTION LOSS (dB)	CONNECTOR TYPE *	FLANGE EQUIV.	MATERIAL	"A" DIMENSION (Max. Inches)	"B" DIMENSION (Max. Inches)
180	240130	18.0 – 40.0	1.60	.75	2.9mm/2.4mm	Cover	Aluminum	1.50	0.7
650	240131	6.5 – 18.0	1.25	.50	SMA	Cover	Aluminum	2.0	1.0
750	240132	7.5 – 18.0	1.25	.50	SMA	Cover	Aluminum	2.0	1.0
580	240133	5.8 – 16.0	1.35	.35	SMA/TNC	Cover	Aluminum	2.0	1.5
475	240134	4.75 – 11.0	1.25	.35	SMA/TNC	Cover	Aluminum	3.0	1.5
350	240135	3.5 – 8.2	1.25	.30	SMA/TNC	Cover	Aluminum	5.0	2.0
200	240136	2.0 – 4.8	1.25	.30	SMA/TNC	Cover	Aluminum	8.0	3.0

*Standard Waveguide to Coax Adapters are supplied with a female connector.
 Customer to Specify by adding desired connector to part number as a suffix. Example: 240132 -SMA.



Microtech Inc. Waveguide to Coax Adapters are made from a precision extruded tubing with the end caps silver or dip brazed to give you a precise and durable unit for both lab and systems use over the full specified operating band, with a minimum VSWR and Insertion Loss. These units can be built to be pressure tight on request.

Note: Other configurations and specifications available upon request.
 Adapters that conform to MIL-DTL-22641 are also available.
 Contact the factory with your requirements.