



1425 Highland Avenue (Rt. 10) P.O. Box 728
 Cheshire, CT 06410 - 1216 U.S.A.
 Phone # 203 - 272 - 3234
 Fax # 203 - 271 - 0352
 E - mail: Sales@microtech-inc.com
 Visit our Web site: <http://www.microtech-inc.com>

WAVEGUIDE TORSIONAL JOINT SPECIFICATIONS

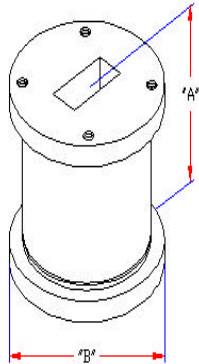
TYPICAL ELECTRICAL / MECHANICAL SPECIFICATIONS							
EIA WR SIZE	MODEL No.	FREQUENCY RANGE (GHz)	VSWR Max. 20% Bandwidth	INSERTION LOSS Maximum	FLANGE EQUIV.	"A" DIMENSION	"B" Dia Max.
22	235014	33.00 - 50.00	1.40	0.40	Round	1.00	1.13
28	235015	26.50 - 40.00	1.20	0.30	Cover	1.25	0.98
42	235016	18.00 - 26.50	1.10	0.20	Round	1.50	1.13
62	235017	12.40 - 18.00	1.10	0.20	Round	1.50	1.75
75	235018	10.00 - 15.00	1.10	0.10	Round	1.75	1.94
90	235019	8.20 - 12.40	1.10	0.10	Round	2.12	2.13
112	235020	7.05 - 10.00	1.10	0.08	Round	2.75	2.50
137	235021	5.85 - 8.20	1.10	0.08	CPRF	3.25	3.05
159	235022	4.90 - 7.05	1.10	0.06	CPRF	3.85	3.80
187	235023	3.95 - 5.85	1.10	0.06	CPRF	4.50	4.06
229	235024	3.30 - 4.90	1.10	0.05	CPRF	5.53	4.52
284	235025	2.60 - 3.95	1.10	0.05	CPRF	6.87	5.09
340	235026	2.20 - 3.30	1.10	0.05	CPRF	8.25	6.42

Notes: Units are Silver Plated Brass. Aluminum is also available.

Standard configuration covers 20% of the Band.

Normal motion is +or- 50 Degrees rotation. Other values available upon request.

Units have tapped holes for Mounting.



Microtech, Inc. Torsional Joints will help shield your system from torsional stresses. Low VSWR, low Insertion Loss, and High Power Handling are achieved through the use of infinitely variable one-quarter wavelength (1/4) steps. Presenting a more economical solution than a rotary joint, our rugged construction affords you long life under extreme operating conditions. Microtech, Inc. Torsional Joints feature minimum phase WOW, stable phase linearity and designs that lend themselves to high power applications, all at a reasonable cost. If you need a special configuration or a multi-channel rotary joint just contact the factory or our area representative with your requirements. Our complete in-house engineering and production facility is at your disposal.