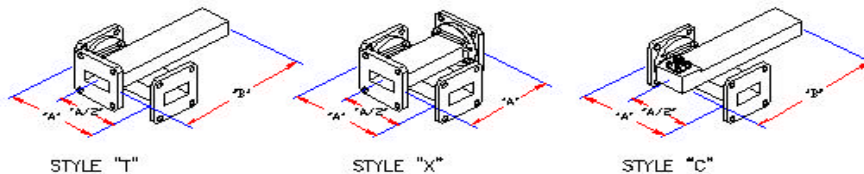




1425 Highland Avenue (Rt. 10) P.O. Box 728
 Cheshire, CT 06410 - 1216 U.S.A.
 Phone # 203 - 272 - 3234
 Fax # 203 - 271 - 0352
 E - mail: Sales@microtech-inc.com
 Visit our Web site: <http://www.microtech-inc.com>

CROSSGUIDE COUPLER SPECIFICATIONS

TYPICAL ELECTRICAL / MECHANICAL SPECIFICATIONS								
EIA WR SIZE	MODEL No. (see notes)	FREQUENCY RANGE (GHz)	PRIMARY ARM VSWR Max.	COUPLING VARIATION + or - (dB)	FLANGE EQUIV.	"A" DIMENSION (Max. inches)	"B" DIMENSION (Max. inches)	STYLE "C" JACK
22	233317	33.00 - 50.00	1.10	3.0	Cover	2.25	3.38	2.9
28	219764	26.50 - 40.00	1.10	2.0	Cover	2.25	3.38	2.9
42	219765	18.00 - 26.50	1.10	2.0	Cover	2.25	3.38	SMA
62	219766	12.40 - 18.00	1.10	1.5	Cover	2.50	3.50	SMA
75	219767	10.00 - 15.00	1.10	1.5	Cover	3.00	4.50	SMA
90	219768	8.20 - 12.40	1.10	1.5	Cover	3.00	4.50	SMA
112	219769	7.05 - 10.00	1.10	1.5	Cover	4.00	6.00	SMA
137	219770	5.85 - 8.20	1.10	1.0	Cover	5.00	7.50	N
159	219771	4.90 - 7.05	1.10	1.0	CPRF	5.00	7.50	N
187	219772	3.95 - 5.85	1.10	1.0	CPRF	5.00	7.50	N
229	219773	3.30 - 4.90	1.10	1.0	CPRF	6.00	9.00	N
284	219774	2.60 - 3.95	1.10	1.0	CPRF	8.00	12.00	N
340	236944	2.20 - 3.30	1.10	1.0	CPRF	10.00	15.00	N



Notes:

- Standard couplings available are 20, 30, 40, 50, and 60. Others values available on special order. Specify by adding coupling and style desired as a suffix to the part number. Example: 233317X-20.
- Coaxial secondary outputs are also available. Contact the factory or our local Manufacturer's Representative for details.
- Nominal directivity is 20 dB.
- Couplers that conform to MIL-C-15370 are also available.