



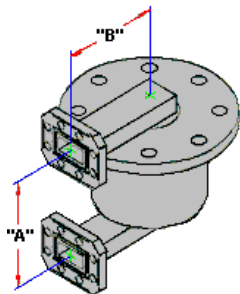
Manufacturers-Precision Microwave Components  
Cheshire, CT U.S.A.

1425 Highland Ave (Rt. 10) P.O. Box 728  
Cheshire, CT 06410-1216 U.S.A  
Phone #203-272-3234 Fax #203-272-0352  
E-Mail: [Sales@microtech-inc.com](mailto:Sales@microtech-inc.com)  
Visit our website: <http://www.microtech-inc.com>

## “U” STYLE ROTARY JOINT SPECIFICATIONS

TYPICAL ELECTRICAL / MECHANICAL SPECIFICATIONS							
EIA WR SIZE	FREQUENCY RANGE (GHz)	VSWR Maximum	INSERTION LOSS Maximum	FLANGE EQUIV.	MATERIAL	"A" DIMENSION	"B" DIMENSION
22	33.00 - 50.00	2.00	1.00	Cover	Brass	1.50	2.00
28	26.50 - 40.00	2.00	1.00	Cover	Brass	1.50	2.00
42	18.00 - 26.50	1.80	0.75	Cover	Brass	2.00	2.00
62	12.40 - 18.00	1.60	0.50	Cover	Brass	2.00	2.00
75	10.00 - 15.00	1.60	0.50	Cover	Brass	1.60	2.13
90	8.20 - 12.40	1.50	0.40	Cover	Brass	2.00	3.00
112	7.05 - 10.00	1.50	0.40	Cover	Brass	2.88	4.00
137	5.85 - 8.20	1.50	0.40	CPRG	Brass	2.88	3.00
159	4.90 - 7.05	1.50	0.40	CPRG	Brass	4.00	4.00
187	3.95 - 5.85	1.50	0.40	CPRF	Brass	4.13	3.50
229	3.30 - 4.90	1.50	0.40	CPRG	Brass	5.00	4.00
284	2.60 - 3.95	1.50	0.40	CPRF	Brass	7.00	4.00
340	2.20 - 3.30	1.50	0.40	CPRF	Brass	7.00	5.00

Notes: Maximum VSWR WOW = .10 typical. Maximum Insertion Loss WOW = .10 dB typical. Improved VSWR values can be obtained over a reduced portion of the band.



Designed for long life under extreme operating conditions, Microtech, Inc. rotary joints feature rugged construction, minimum phase WOW, stable phase linearity and designs that lend themselves to high power applications, all at a reasonable cost. If you need a special configuration or a multi-channel rotary joint just contact the factory or our area representative with your requirements. Our complete in-house engineering and production facility is at your disposal.